

## Number of Living Donor Kidney Transplantation

The number of transplantations using the kidney from a living donor



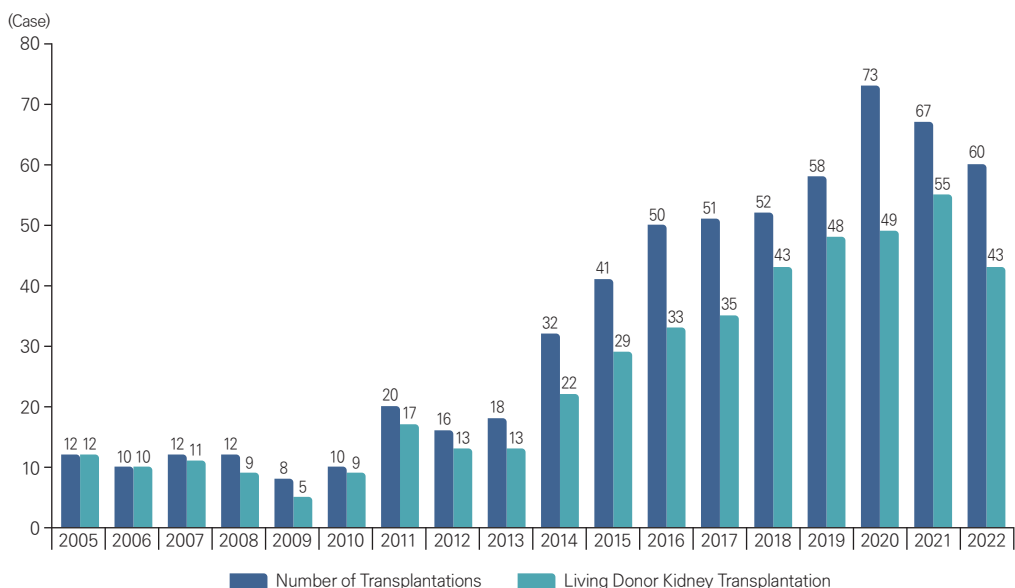
### Definitions

- ◆ **Kidney transplantation:** A treatment method where a healthy kidney donated by another individual is transplanted to the patient who has lost kidney function.
- ◆ **Living donor:** A living person who has donated an organ.



### Result

January 1, 2005 – December 31, 2022



### Interpretation

- ◆ The number of living donor kidney transplantation has decreased due to COVID-19.



### Improvement

- ◆ Develop a promotional and educational video for patients and donors. Utilize Youtube and hospital website.
- ◆ Set up a priority appointment slot for kidney transplant patients.

Data source SNUBH EMR (Electronic Medical Record), KCDC Integrated Management System for Disease and Health Care\_ Current Transplantees

## Number of Deceased Donor Kidney Transplantation

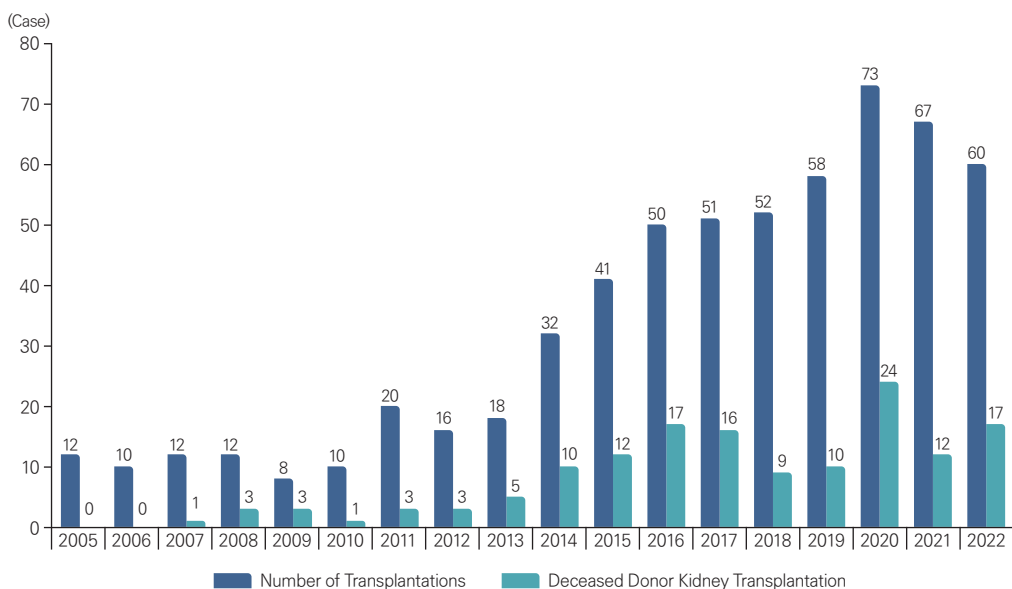
The number of transplantations using the kidney from a deceased donor

### Definitions

- ◆ **Brain death:** A state where the brain function has been irreversibly damaged due to various causes so that respiration is maintained using a respirator without voluntary breathing and the heart function is maintained for a certain period of time based on the automatic cardiac cycle.
- ◆ **Deceased donor:** A patient whose entire brain function has been lost irreversibly according to the criteria and procedures to determine brain death.

### Result

January 1, 2005 – December 31, 2022



### Interpretation

- ◆ There is a recovering trend in deceased donor transplants due an increase of deceased donor within the hospital.

### Improvement

- ◆ Systemized management by operating a deceased donor waitlist system.
- ◆ Provide a video lecture on organ donation and transplantation.

Data source SNUBH EMR (Electronic Medical Record), KCDC Integrated Management System for Disease and Health Care\_ Current Transplantees

## Number of ABO-incompatible Kidney Transplantation

The number of transplantations using the kidney from a donor with whom ABO blood type is incompatible



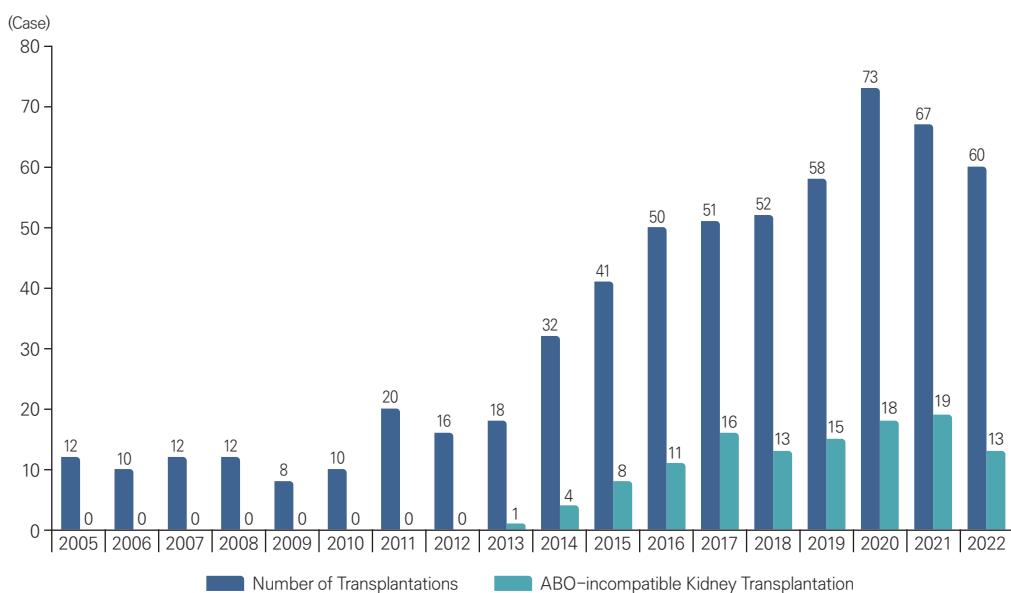
### Definitions

- ◆ **ABO-incompatible kidney transplantation:** A transplantation performed after an appropriate pretreatment where the antibody titer is reduced to a target level because of a possibility of the anti-ABO antibody in the donor's blood attacking the transplanted kidney tissue.



### Result

January 1, 2005 – December 31, 2022



### Interpretation

- ◆ Possibly affected the decrease in living donor kidney transplantation case.



### Improvement

- ◆ Empower multidisciplinary approach for high risk transplantation cases.
- ◆ In-depth consultation for patients and family members in cases of ABO-incompatible kidney transplantation.

Data source SNUBH EMR (Electronic Medical Record), KCDC Integrated Management System for Disease and Health Care\_ Current Transplanttees

## Survival Rate, Kidney Transplantation

The proportion of surviving patients within 1 or 5 years from the day of kidney transplantation



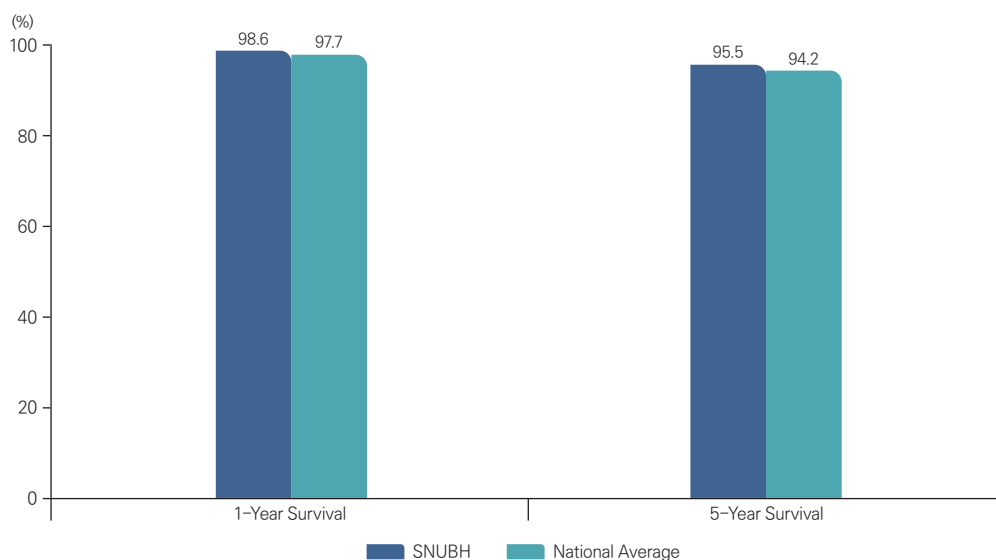
### Definitions

- ◆ **Survival rate:** The rate of survival estimated using a statistics package Stata 15.0 Life-table.



### Result

January 1, 2005 – December 31, 2022



### Interpretation

- ◆ The number of deaths has increased during COVID-19 pandemic.



### Improvement

- ◆ Improve patient care management during COVID-19 pandemic: promote vaccination, COVID-19 news update on the website, emergency consultations at outpatient clinic, building a network between providers, actively communicate with patients, etc.

**Data source** SNUBH EMR (Electronic Medical Record), 2019 Statistics Annual Report on Transplantation of Organs, etc. and Human Tissue Donation: KCDC Organ Transplantation Center

## Death-censored Graft Survival Rate

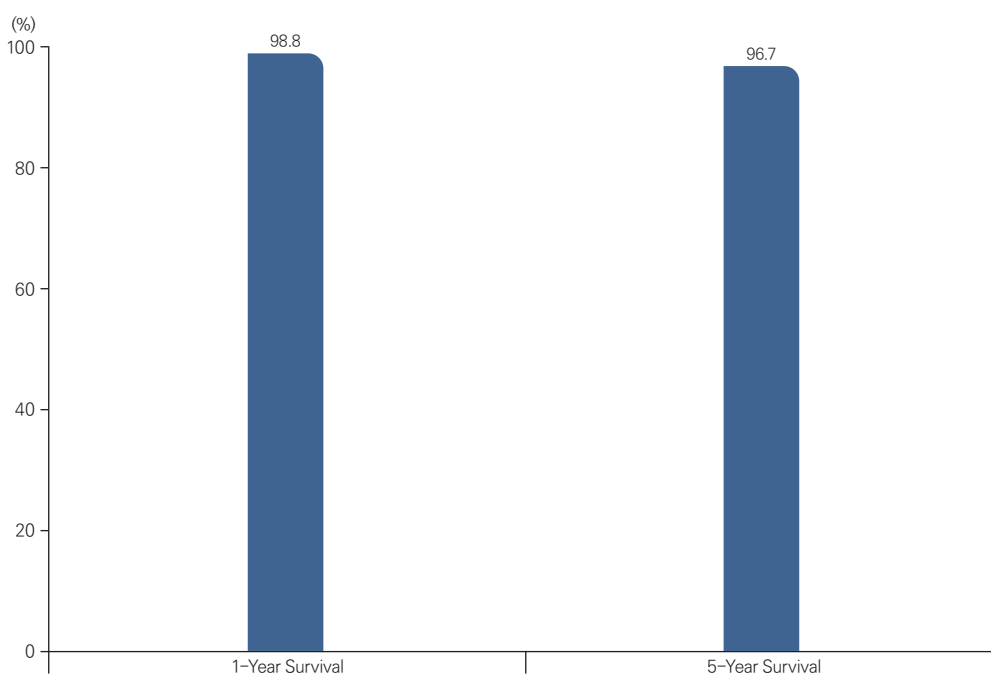
The proportion of functioning transplanted kidney

### Definitions

- ♦ **Survival rate:** The rate of survival estimated using a statistics package Stata 15.0 Life-table.

### Result

January 1, 2005 – December 31, 2022



### Interpretation

- ♦ Showed excellent survival rate despite the increased number of deceased donor transplant and highly sensitized transplant.

Data source: SNUBH EMR (Electronic Medical Record)